

# IBM buckling sleeves

The most popular switch no one has heard of



Kali (aka, Admiral Shark)  
sharktastica.co.uk  
/r/modelm



# Me!

- Joined the hobby in August 2019
- Officially, website started to tackle lack of centralised and well-referenced hub for IBM keyboard info
- Main attractions include IBM part number database, the wiki, research articles and many reference pages
- Also moderate the IBM Keyboards Discord server & /r/modelm





# IBM

- Best known for the IBM PC and ThinkPad
- Inventions include ATMs, bar codes, dynamic RAM, hard drives, magnetic stripe cards, the relational database and various important semiconductor manufacturing techniques
- Built the Saturn V rocket instrument ring that helped take humanity to the Moon
- Today focus on consultancy, AI, supercomputers, quantum computers, and patent farming



*Credits: Rama & Musée Bolo (CC BY-SA 2.0 FR)*



# A quick recap...



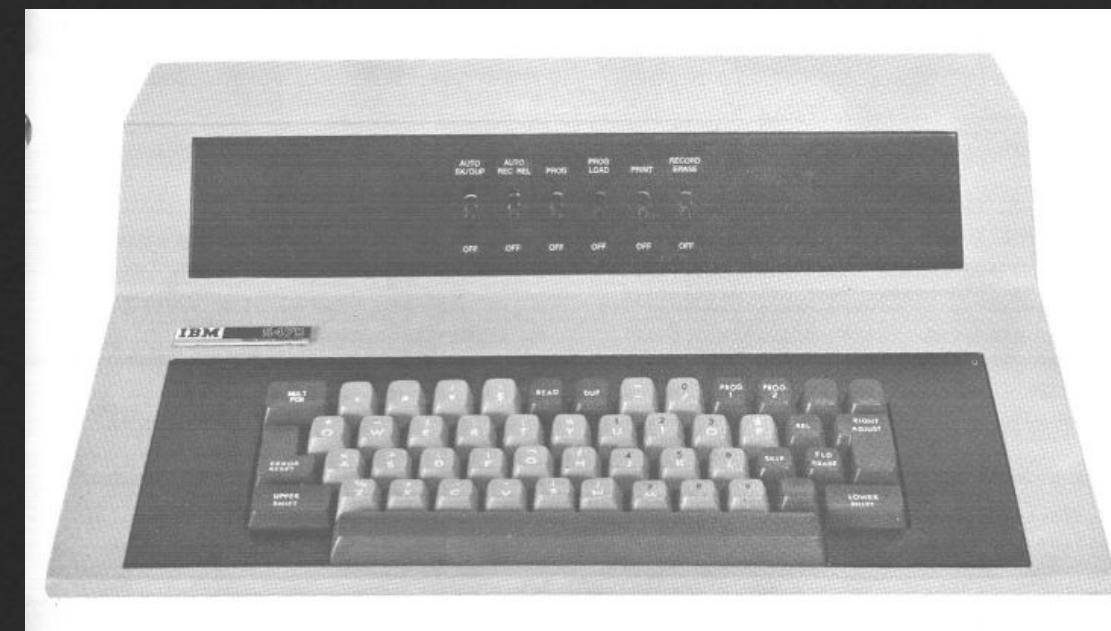
Gen 1: Card Punch (1949)

Credits: B. Franske (GFDL 1.2)



Gen 2: Printer-Keyboard (1963)

Credits: IBM (fair dealing)



Gen 3: Elastic Diaphragm (1969)

Credits: IBM (fair dealing)



Gen 4: Model B (1972)

Credits: Admiral Shark (CC BY-NC-SA 4.0)



Gen 5: Model F (1981)

Credits: Admiral Shark (CC BY-NC-SA 4.0)



Gen 6: Model M (1984)

Credits: Admiral Shark (CC BY-NC-SA 4.0)





# IBM Wheelwriter 5 Keyboard Assembly

Credits: Admiral Shark (CC BY-NC-SA 4.0)





# The IBM buckling sleeve

Credits: Admiral Shark (CC BY-NC-SA 4.0)





**IBM Enhanced Keyboard**

*Credits: Admiral Shark (CC BY-NC-SA 4.0)*



**IBM PS/2 L40SX**

*Credits: Uberman765 (donated photo)*



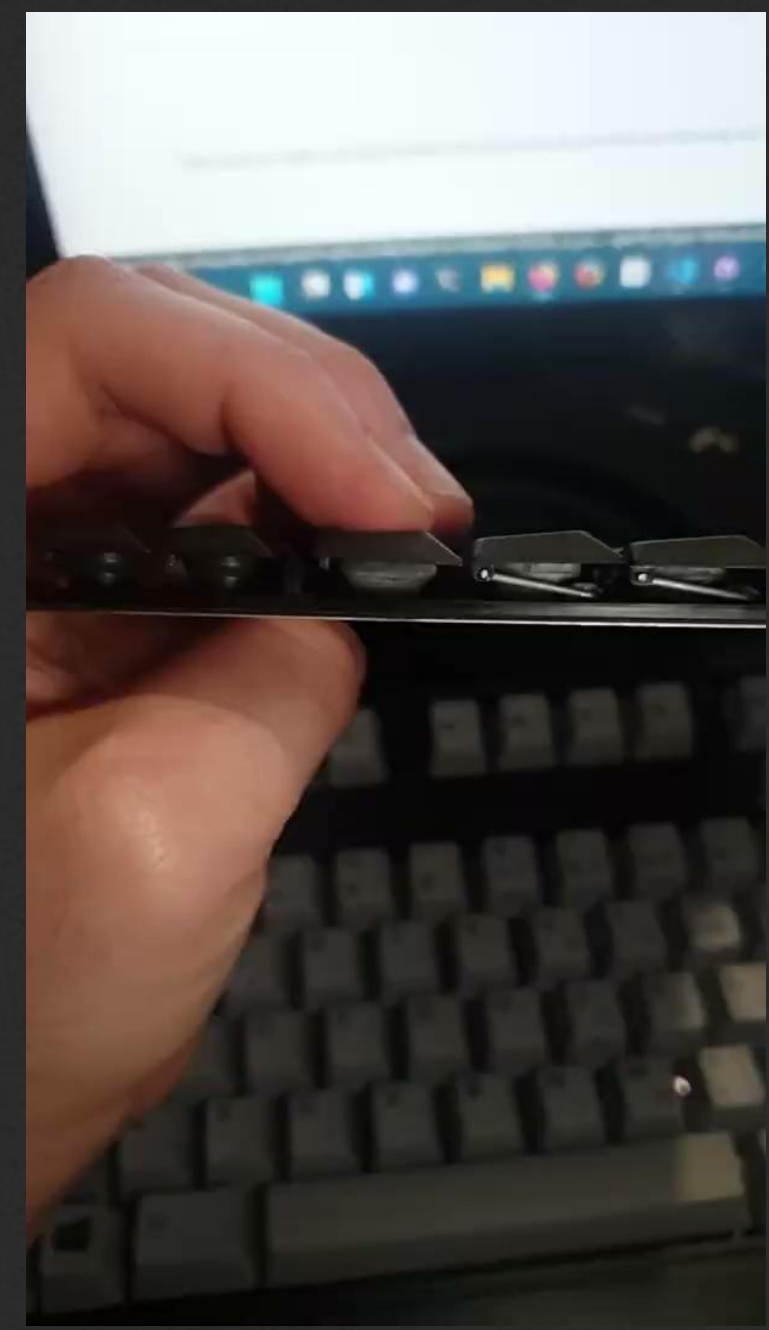
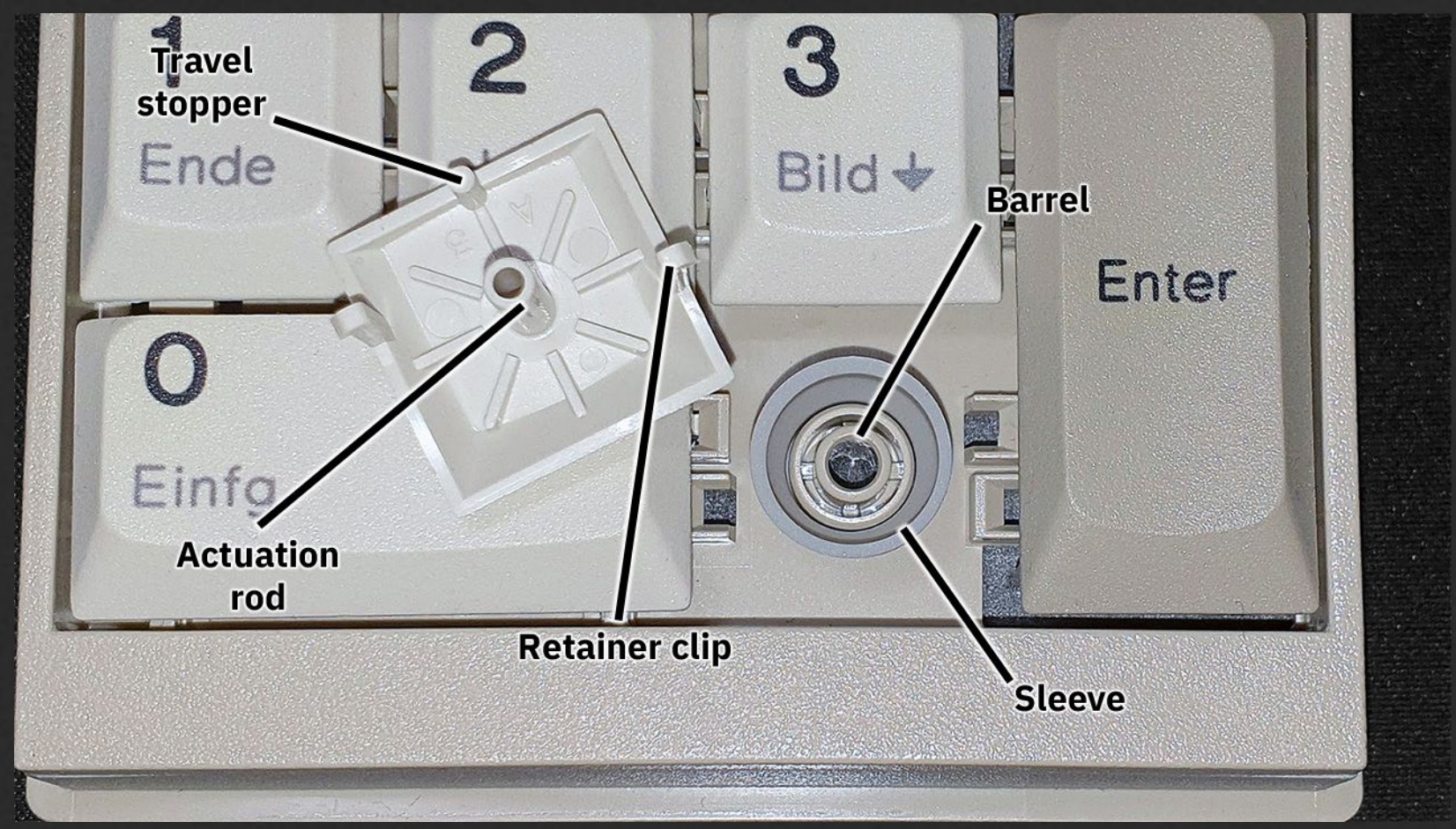


**IBM PS/2 L40SX Numeric Keypad (M3)**  
*Credits: Admiral Shark (CC BY-NC-SA 4.0)*



**IBM Space Saver Keyboard (M4-1)**  
*Credits: Admiral Shark (CC BY-NC-SA 4.0)*





### M3/M4 buckling sleeve components

Credits: Admiral Shark (CC BY-NC-SA 4.0)

### Pressing a sleeve

Credits: Admiral Shark (CC BY-NC-SA 4.0)





## Various buckling sleeve variants

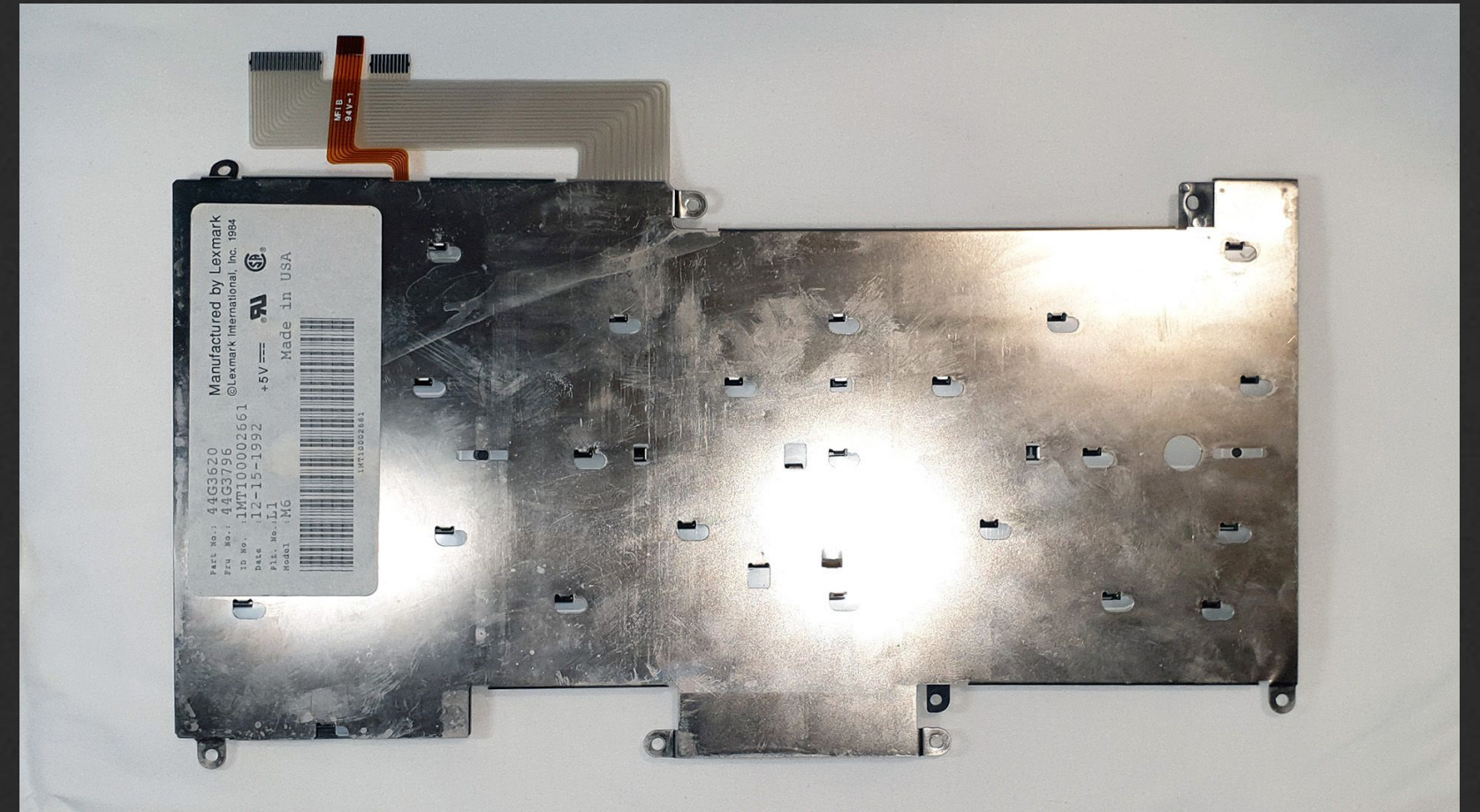
Credits: Admiral Shark (CC BY-NC-SA 4.0)





**IBM ThinkPad 365ED**

*Credits: Admiral Shark (CC BY-NC-SA 4.0)*



**IBM ThinkPad 700/720 Keyboard Assembly (M6)**

*Credits: Admiral Shark (CC BY-NC-SA 4.0)*





Nostalgia Nerd - The \$11k PS2 laptop

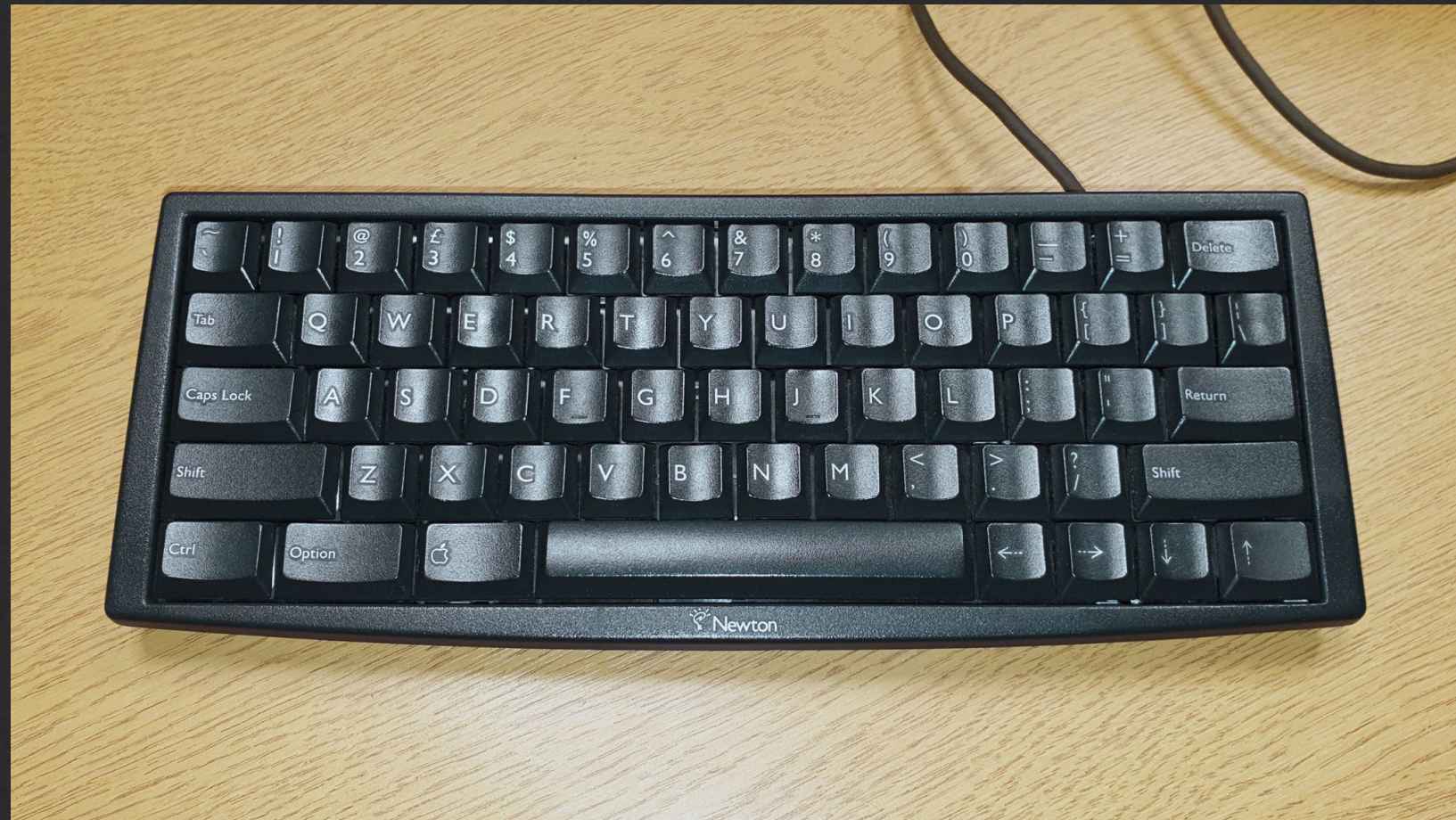
*Credits: video thumbnail (used under fair dealing)*



EEVblog - IBM L40SX Retro Laptop Teardown

*Credits: video thumbnail (used under fair dealing)*





# Apple Newton MessagePad Keyboard (model X0044, based on IBM M6-1)

*Credits: Admiral Shark (CC BY-NC-SA 4.0)*





**IBM RANPOS Keyboard (M9)**

*Credits: IBM (used under fair dealing)*



**IBM Modifiable Layout Keyboard (M11)**

*Credits: IBM (used under fair dealing)*





Walmart's IBM Model M7

Credits: Reddit (used under fair dealing)



ASDA's IBM Model M8s

Credits: Admiral Shark (CC BY-NC-SA 4.0)





**IBM MPOS 67-Key LCD Keyboards (“M8-e”)**

*Credits: IBM (used under fair dealing)*

**IBM MANPOS Keyboard (“M9-e”)**

*Credits: IBM (used under fair dealing)*



**TOSHIBA** INDUSTRIES HARDWARE SOFTWARE SERVICES COMPANY

### Modular CANPOS Keyboard

Ideal for retailers that need to make the most of a small checkout counter, the space-saving Compact Alpha Numeric Point-of-Sale (CANPOS) modular keyboard is over 20% narrower than Toshiba's standard retail ANPOS keyboard. Pairs well with TCx™ 300 and TCx™ 700 POS systems.

[DOWNLOAD BROCHURE](#)

### Modular 67-Key Keyboard

A great option for retailers that need additional function keys to support more robust applications and more consumer support functions, Toshiba's Modular 67-Key Keyboard makes retail transactions easier and faster.

[DOWNLOAD BROCHURE](#)

[START A CONVERSATION](#) +

TGCS' MPOS keyboards still on their website





## Unicomp-made IBM-branded M4-1

*Credits: Admiral Shark (CC BY-NC-SA 4.0)*

## Various Unicomp Mighty Mice

*Credits: Unicomp (used under fair dealing)*





[sharktastica.co.uk/buckling\\_sleeves](http://sharktastica.co.uk/buckling_sleeves)



